



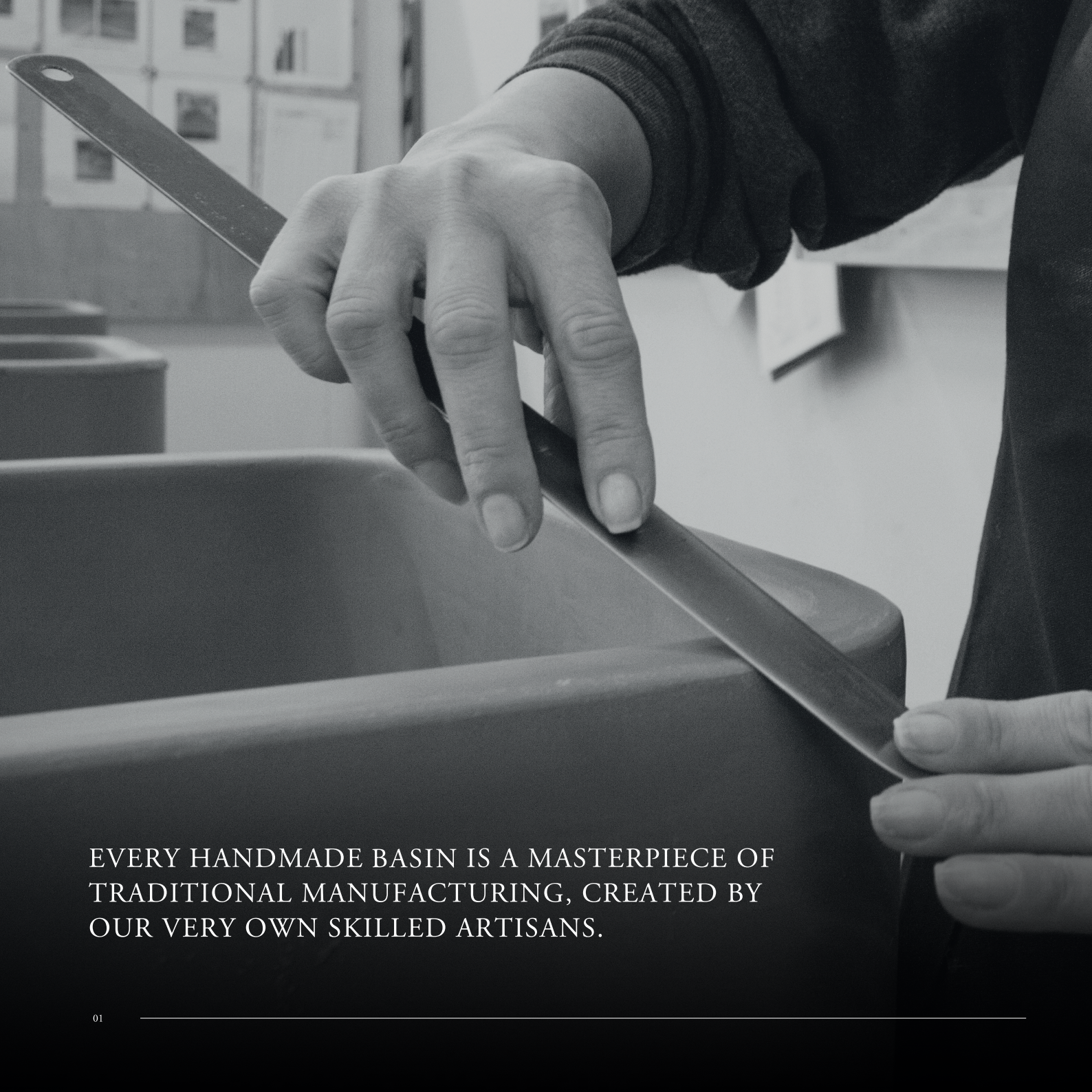
WHITEBIRK SINK COMPANY

• ENGLAND •

THE

— BATHROOM —

COLLECTION



EVERY HANDMADE BASIN IS A MASTERPIECE OF
TRADITIONAL MANUFACTURING, CREATED BY
OUR VERY OWN SKILLED ARTISANS.



HANDMADE IN ENGLAND

OUR STORY

It was right here in Lancashire, that the very first traditional fireclay sinks were made, back in the late 1800s. Centuries later, here at the Whitebirk Sink Company we're proud to be the only British-owned company continuing this fine tradition.

Our skilled artisans, who draw upon years of specialist experience, create truly iconic kitchen and bathroom products here in the heart of the United Kingdom. We have named our bathroom range after the stunning rivers and landmarks of Britain, reflecting the heritage and legacy that we follow.





WE TAKE PRIDE USING TIME-HONOURED,
TRADITIONAL METHODS IN OUR
MANUFACTURING PROCESS.



HANDMADE IN ENGLAND

OUR PROCESS

MODELLING AND MOULDING

Each sink design is hand modelled in plaster, formed slightly oversize to allow for the natural clay shrinkage that occurs through the production process. From here, we make the reverse plaster mould, which will be dried for up to two weeks in dedicated temperature-controlled rooms. This ensures optimum production performance and dimensional consistency.

CLAY CASTING

We use virgin local clays, giving us an industry-leading level of control over dimensional accuracy and consistency. All materials are tested to (and exceed) British, European and North American standards. Our clay is cast into the preconditioned moulds, tightly packed to a controlled thickness and left to start the drying process. This method has been used for centuries and is tried and tested to offer the best performance specifications and strength.

Between twenty-four and forty-eight hours later, the sink is then 'turned out' from the mould to continue the drying process.

HAND FINISHING AND DRYING

After the sink has been turned out of the mould, we meticulously hand finish the surfaces with a variety of wooden and metal tools, along with leathers, all to give the required finish. The sinks are allowed to dry naturally at room temperature for a few days. Then, they're moved into our automated, humidity controlled drying rooms, to fully remove any residual moisture.

GLAZE APPLICATION

The glazing is done in two stages. First, the engobe (a type of undercoat) is applied, then they are given the final coat of glaze. In the case of our mottled finish, complex glazes are required to achieve this beautiful effect. This process takes a three coat application. Now, they're ready for the kiln.

FIRING

The sinks are set on the kiln for a firing process that will take them over 36 hours, reaching temperatures of more than 1180 degrees Celsius. We obtain the beautiful finish by firing at varying temperatures during this time, before the sinks are allowed to cool naturally in the kiln.

INSPECTION

Our experienced craftsmen personally inspect every sink that we produce, attesting to its quality, integrity and durability. This allows us to conform to the standards set out by BS 1206 1974. The nature of the handmade process also means that tiny variations can occur between each sink. This means when you buy a sink from us, you'll be buying one that is - in its own way - beautifully unique.



ORDER ANY BASIN IN
ANY FINISH
FROM OUR COLLECTIONS FOR
FLEXIBILITY OF CHOICE.

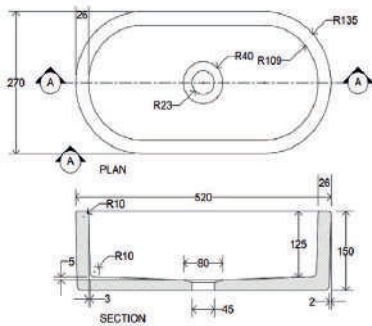


LUNE - WHITE

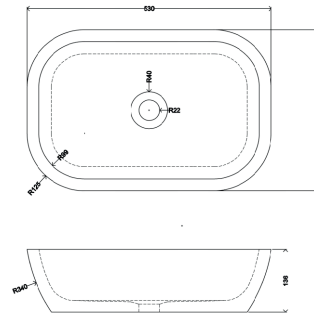


BATHROOM COLLECTION

Bathroom basins should be one of the main focal points of what is a highly functional room. Basins have undergone a notable transition in the last couple of decades, and we at Whitebirk have developed a range of classic designs, exciting colours and unique textures to provide a real statement in your room for a lifetime of service and pleasure.



EDEN
520 x 270 x 150 mm



LUNE
530 x 350 x 135 mm



EDEN SHOWN IN SOFT CLOUD MOTTLE

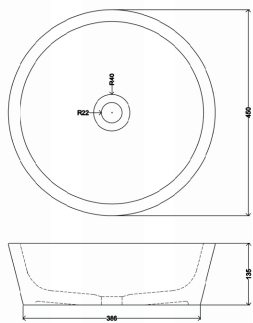
ALL SINKS IN OUR BATHROOM COLLECTION ARE AVAILABLE IN ANY OF OUR COLOURS.

WHITEBIRK...

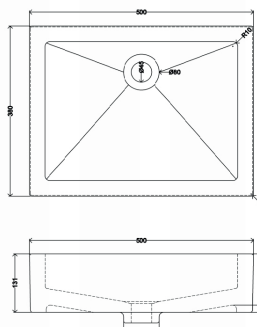
YOUR BASIN,
YOUR WAY.



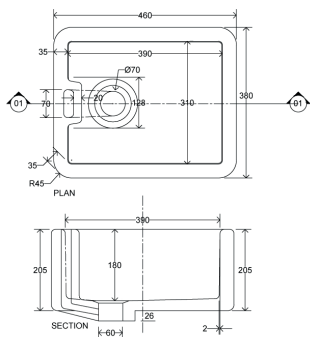
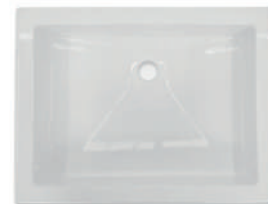
HODDER - MATT BLACK



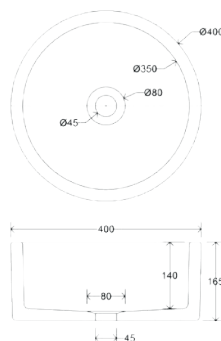
IRWELL
450 x 450 x 135 mm



HODDER
500 x 380 x 130 mm



BABY BELFAST
460 x 380 x 205 mm



CALDER
400 x 400 x 165 mm



THE
COLOUR
• COLLECTION •

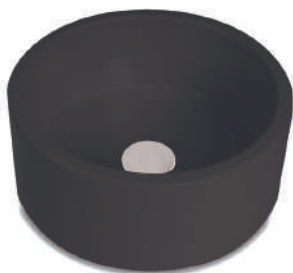


CALDER - DUSKY PINK



COLOUR COLLECTION

Add a splash of colour with the beautifully designed sinks in our exclusive Colour Collection. They are available in various contemporary finishes that put a modern twist on a classic traditional style, making them iconic focal points for any bathroom.



MATT BLACK
MATT (GLOSS AVAILABLE)



CHARCOAL
MATT



GREY
MATT (GLOSS AVAILABLE)



MATT WHITE
MATT (GLOSS AVAILABLE)



DUSKY PINK
MATT (GLOSS AVAILABLE)



DUCK EGG BLUE
MATT (GLOSS AVAILABLE)



MIDNIGHT BLUE
SATIN MATT



FOREST GREEN
SATIN MATT

THIS IS AN INDICATION OF COLOUR AND MAY VARY SLIGHTLY.

THE
MOTTLED

• COLLECTION •



CALDER - BLACK LAVA

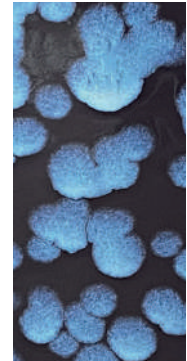


MOTTLE COLLECTION

Complex glazes are used in the manufacturing process to create the stunning sinks in our Mottled Collection, producing distinctive patterns that give them a vibrant contemporary look – perfect for making a statement. We use craft glaze in our handmade process. This may lead to slight variations in the finished product, this is a characteristic that adds to its natural and unique beauty.



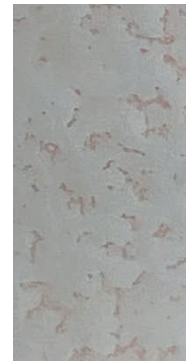
BLACK LAVA



ELECTRIC BLUE



MISTY GREY



PINK PEBBLE

THIS IS AN INDICATION OF COLOUR AND MAY VARY SLIGHTLY.

Kate

William

PERSONALISED LUNE - MIDNIGHT BLUE



PERSONALISED SINKS



These personalised basins are carefully hand-crafted with the words of your chosen message, meaning each one is as individual as the client that buys it. The messages are applied in the same way as our logo transfer, just before the sink is kiln fired. Please enquire with us to be guided on your way to acquiring your very own custom basin(s).

A double basin vanity unit is one of the most luxurious pieces of bathroom furniture.
Make it personal by adding a pair of names to your basin(s).

Logos and images are achievable with our transferring service - this is perfect for hotels and restaurants.
Submit your design to see if this is possible.

All of the sinks and the colours in our Bathroom and Kitchen collection are available for this service with exception of the mottled collection.





UNIVERSAL WASTE - POLISHED BRASS



WASTE FITTINGS

Elevate your basin with one of our stunning push wastes that have been carefully selected to complement our Bathroom Collection. These universal wastes are supplied with two internal fittings for freeflow or click-clack operation. They can also be used in basins with or without an overflow. With a choice of polished brass or chrome, this will be the perfect final touch to your unique Whitebirk basin.

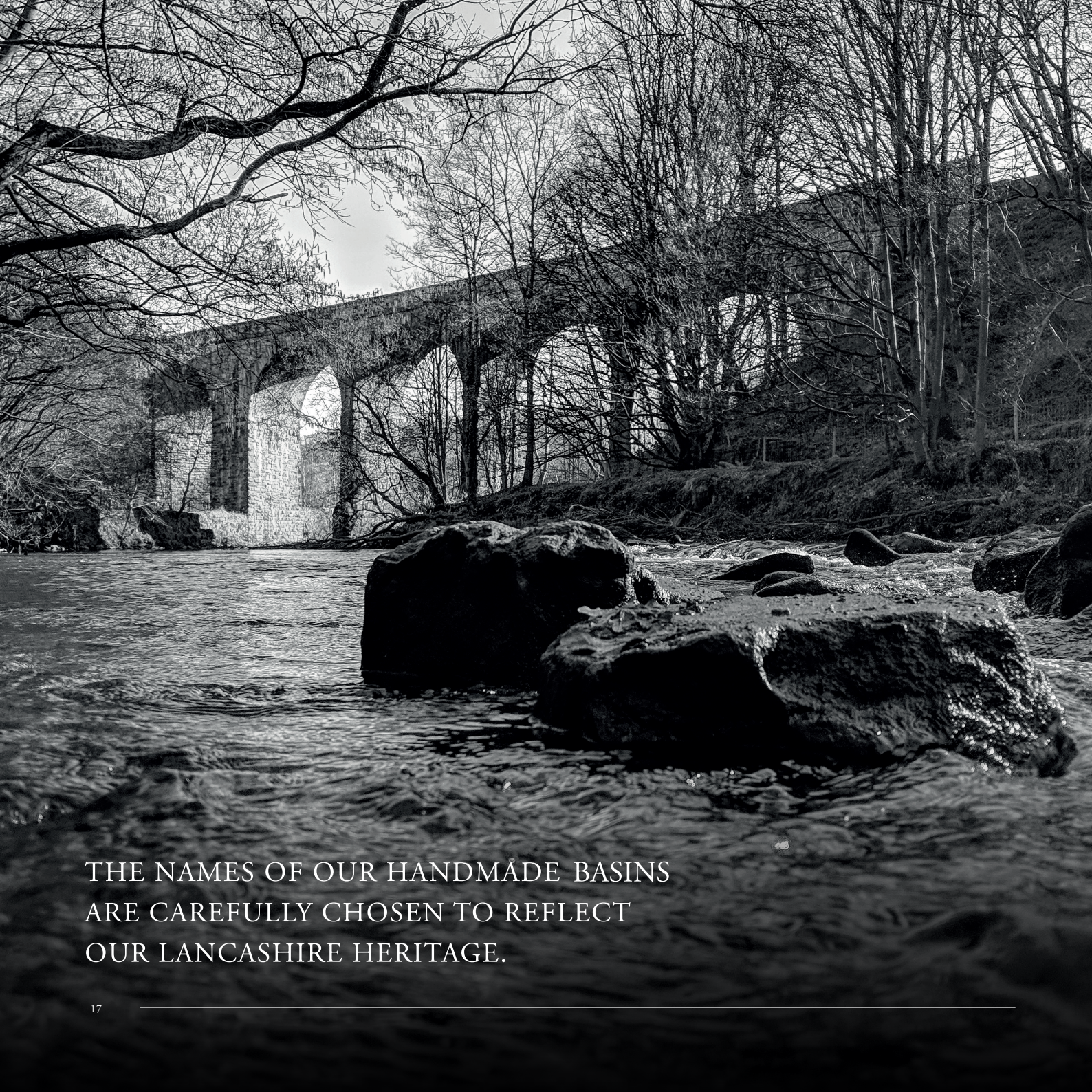


UNIVERSAL WASTE
POLISHED BRASS



UNIVERSAL WASTE
CHROME

MORE FINISHES MAY BE AVAILABLE. PLEASE GET IN TOUCH TO FIND OUT.



THE NAMES OF OUR HANDMADE BASINS
ARE CAREFULLY CHOSEN TO REFLECT
OUR LANCASHIRE HERITAGE.



HANDMADE IN ENGLAND

OUR CRAFTSMEN

We employ a skilled team of local craftspeople and master artisans here at our Blackburn base, honouring the esteemed manufacturing heritage of the area, using traditional materials and long-established techniques.

Motivated by a tireless passion for their craft, these gifted men and women use their rare talents to keep these traditional methods alive, making each and every fireclay sink and basin a marvel of authentic, specialist manufacturing.

Today, we have the enviable distinction of being the only British-owned company to be making handmade bathroom basins and kitchen sinks. We're determined to stay worthy of this legacy by handcrafting high quality products that embody authentic aesthetics, solid durability and endless practicality, ensuring they provide our customers with a lifetime of service.





WHITEBIRK SINK COMPANY

• ENGLAND •

Ribble Business Park, Challenge Way,
Whitebirk, Blackburn, Lancashire. BB1 5RB

(+44) 01254 460321
sales@whitebirk.co
www.whitebirksink.co

WSC-UKBATHROOMBROCHURE-1: SPRING 2022

